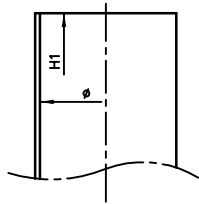


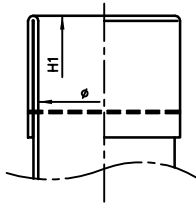
TOP CONSTRUCTION

BOTTOM CONSTRUCTION

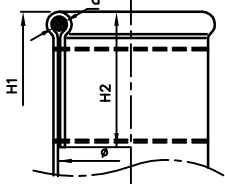
1. Raw edge



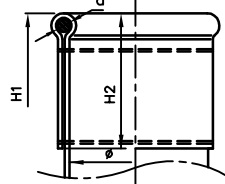
2. Hem



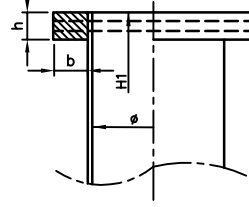
3. Hem to the inside +
a: Cord
b: Steel ring
c: Rubber O-ring



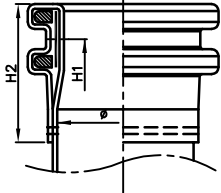
4. Hem to the outside +
a: Cord
b: Steel ring
c: Rubber O-ring



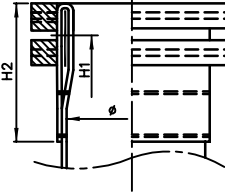
5. Cut edge + single felt ring



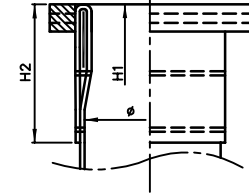
6. Snapping with double beaded band



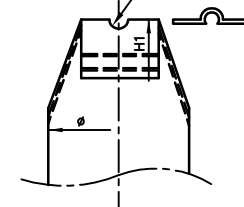
7. Snapping with double felt rings



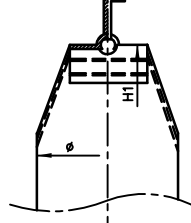
8. Snapping with single felt ring



9. Loop Top
a. hook



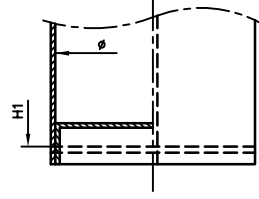
10. Type Keller



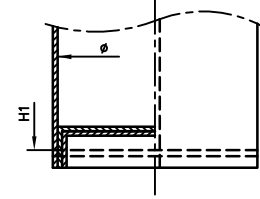
11. Loop with hook



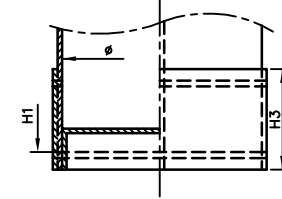
1. Standard bottom



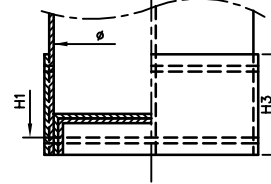
2. Double bottom



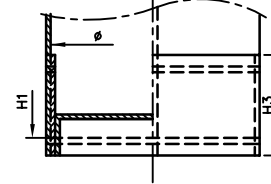
3. Reinforced bottom



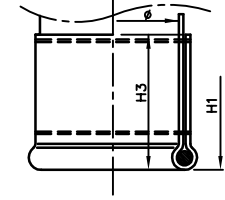
4. Reinforced and double bottom



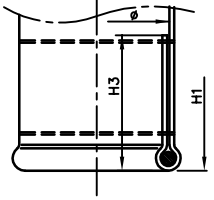
5. Inside reinforced bottom



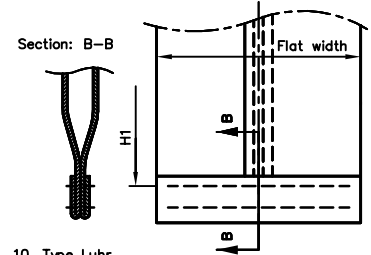
6. Hem to the outside +
a: Cord
b: Steel ring
c: Rubber O-ring



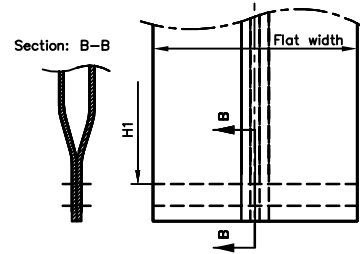
7. Hem to the inside +
a: Cord
b: Steel ring
c: Rubber O-ring



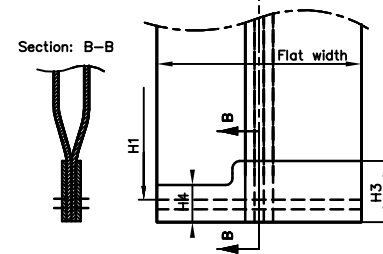
8. Type BMD Garant



9. Flat Sewn



10. Type Luhr



D
C
B
A

D
C
B
A

REV.	ZONE	ECO NUMBER	REVISIONS	APP.	DATE

LIMITATION:		RELEASE N°	TITLE:	
MATERIAL:		PROD. DATE	TUBULAR BAG	
PROD. CODE:		EXP. N°	NUMBER:	REVISION
REF. N°:		EXP. DATE	729-0081	2
USED ON:		FIRST P.O.M.	SCALE:	SHEET: 1 OF 2
DO NOT SCALE		DR. TGO 18/03/05	c/c A7290081-R02	SIZE A3
TOLERANCES UNLESS OTHERWISE SPECIFIED		CHK. RD 20/04/05	SECTIONAL SIZE	OUTLINE SIZE
$6-30 \pm 0.2$ $30-100 \pm 0.3$ $100-300 \pm 0.5$ $300-1000 \pm 1$ Angles $\pm 1^\circ$		design app. RD 20/04/05	DRAWING LOCATION:	
prod. app.		DESIGN CONTROL: _____ All rights to manufacture, copy, reproduce or dispose of this writing or its contents are reserved unless otherwise specified in writing by donaldson europe.		

